

LEGEND

- RIGHT OF WAY LINE
- SITE BOUNDARY
- PARCEL LINE
- EASEMENT
- CHAIN LINK FENCE
- SETBACK
- WATER BOUNDARY
- FEMA FLOODZONE
- FEMA SETBACK

SYSTEM DESCRIPTION	
SYSTEM SIZE (MWp)	172.48
SYSTEM SIZE (MVA)	144.00
DC/AC RATIO	1.20
POI AC CAPACITY (MW _{ac})	125.00
TRACKER MANUFACTURER	NEXTRACKER
MODULE MODEL	BVM7612M
MODULE COUNT	313,600
MODULE STC RATING (Wp)	550
MODULES PER STRING	28
INVERTER MODEL	SUNGROW SG3600UD
INVERTER CAPACITY (kVA)	3,600
INVERTER COUNT	40
GCR (%)	37.7
PITCH (FT)	20.00
NO. OF 1 STRING TRACKERS	307
NO. OF 2 STRING TRACKERS	561
NO. OF 3 STRING TRACKERS	3,257
FENCED AREA (ACRES)	799.95

ENGINEER
AZTEC TYPSA

DEVELOPER
cobra

CONTRACTOR

REV	DATE	DESCRIPTION	DRW		CK		APV	
			CRK	MJS	CRK	MJS	CRK	MJS
0	2/02/24	10% CONCEPTUAL DESIGN						
1	2/07/24	CONCEPTUAL DESIGN						
2	2/16/24	ADDITION OF SWITCHYARD						

SCALE: 1"=800'
SIZE: 22"x34"
PROJECT#: AZENE2400

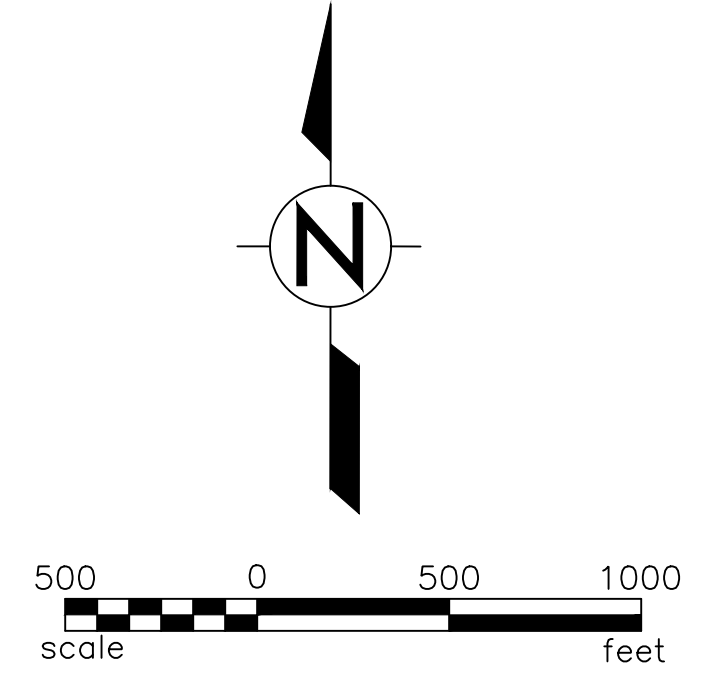
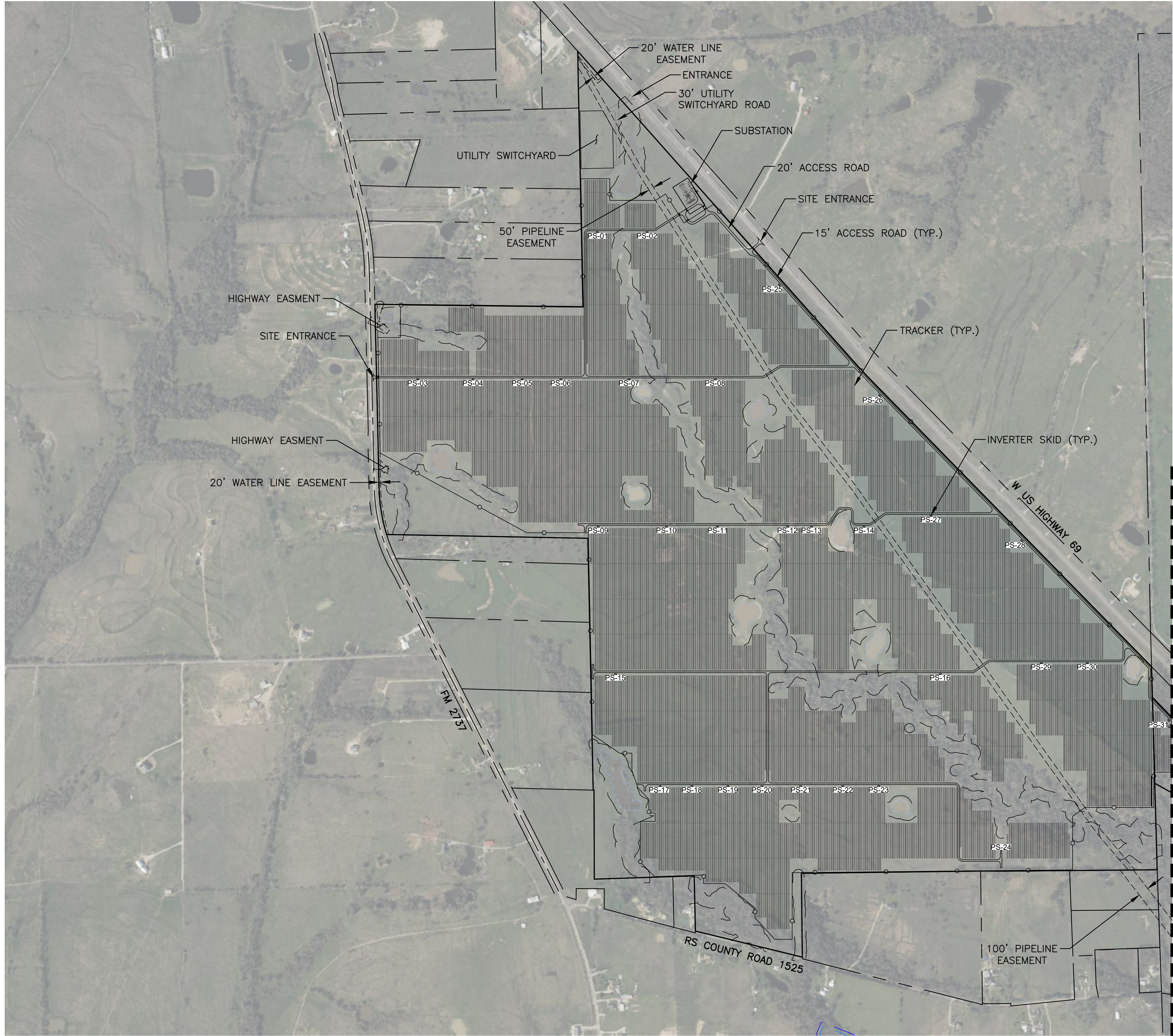
PROJECT: **BARRETT SOLAR**
W US HIGHWAY 69, POINT, TEXAS 75472

TITLE: **SITE LAYOUT 01**

NOT FOR CONSTRUCTION



SHEET: CV02.01
REV: 2



LEGEND

--- (dashed line)	RIGHT OF WAY LINE
— (solid line)	SITE BOUNDARY
- - - (dotted line)	PARCEL LINE
- - - (dashed line)	EASEMENT
— o — (line with circles)	CHAIN LINK FENCE
- - - (dashed line)	SETBACK
· · · (dotted line)	WATER BOUNDARY
- - - (blue dashed line)	FEMA FLOODZONE
- - - (blue dashed line)	FEMA SETBACK

ENGINEER
AZTEC TYPSA

DEVELOPER
cobra

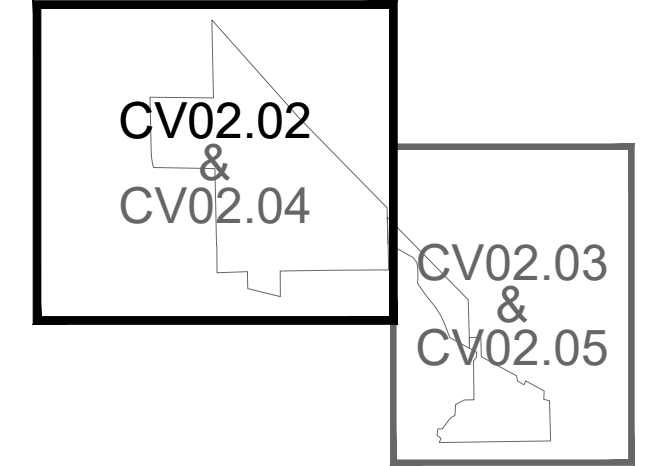
CONTRACTOR

REVISIONS

REV	DATE	DESCRIPTION	DRW	CK	APV
0	2/02/24	10% CONCEPTUAL DESIGN	CRK	MJS	MCF
1	2/07/24	CONCEPTUAL DESIGN	CRK	MJS	MCF
2	2/16/24	ADDITION OF SWITCHYARD	CRK	MJS	MCF

SCALE: 1"=500'
 SIZE: 22"x34"
 PROJECT#: AZENE2400

MATCHLINE - SEE SHEET CV02.03



KEY MAP

NOT FOR CONSTRUCTION

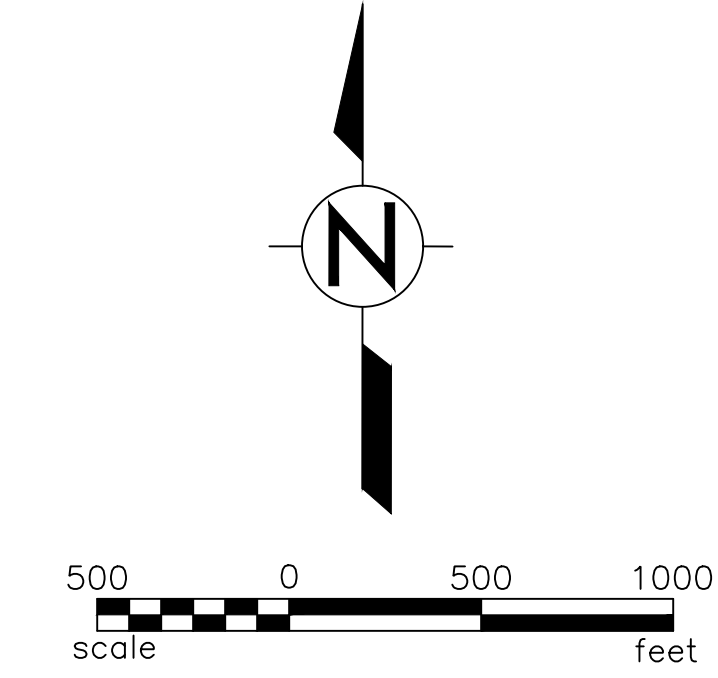
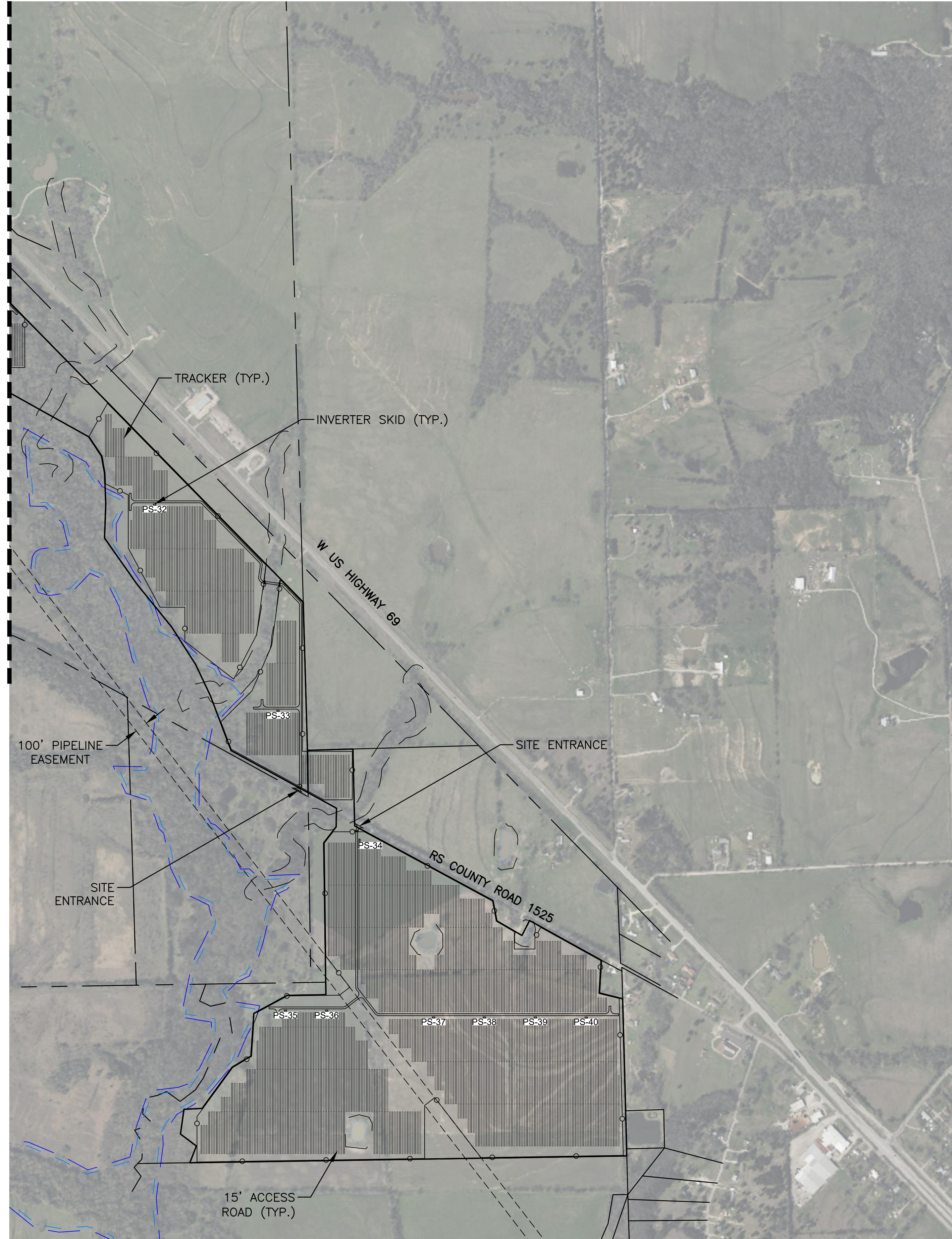


PROJECT
BARRETT SOLAR
 W US HIGHWAY 69, POINT, TEXAS 75472

TITLE
 SITE LAYOUT 02

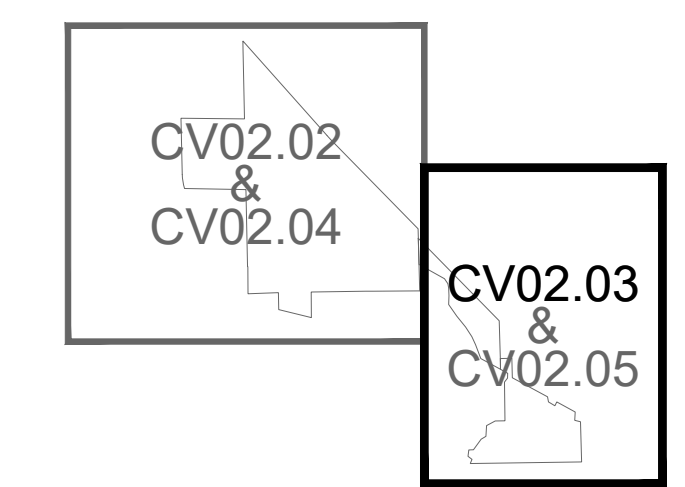
SHEET	REV
CV02.02	2

MATCHLINE - SEE SHEET CV02.02



LEGEND

	RIGHT OF WAY LINE
	SITE BOUNDARY
	PARCEL LINE
	EASEMENT
	CHAIN LINK FENCE
	SETBACK
	WATER BOUNDARY
	FEMA FLOODZONE
	FEMA SETBACK



KEY MAP

NOT FOR CONSTRUCTION



ENGINEER
AZTEC TYPSA

DEVELOPER
cobra

CONTRACTOR

REVISIONS

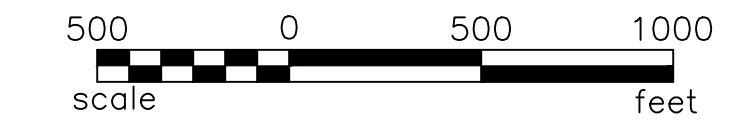
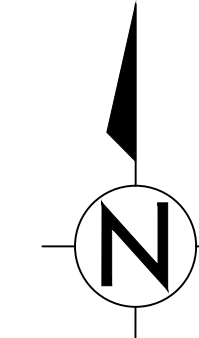
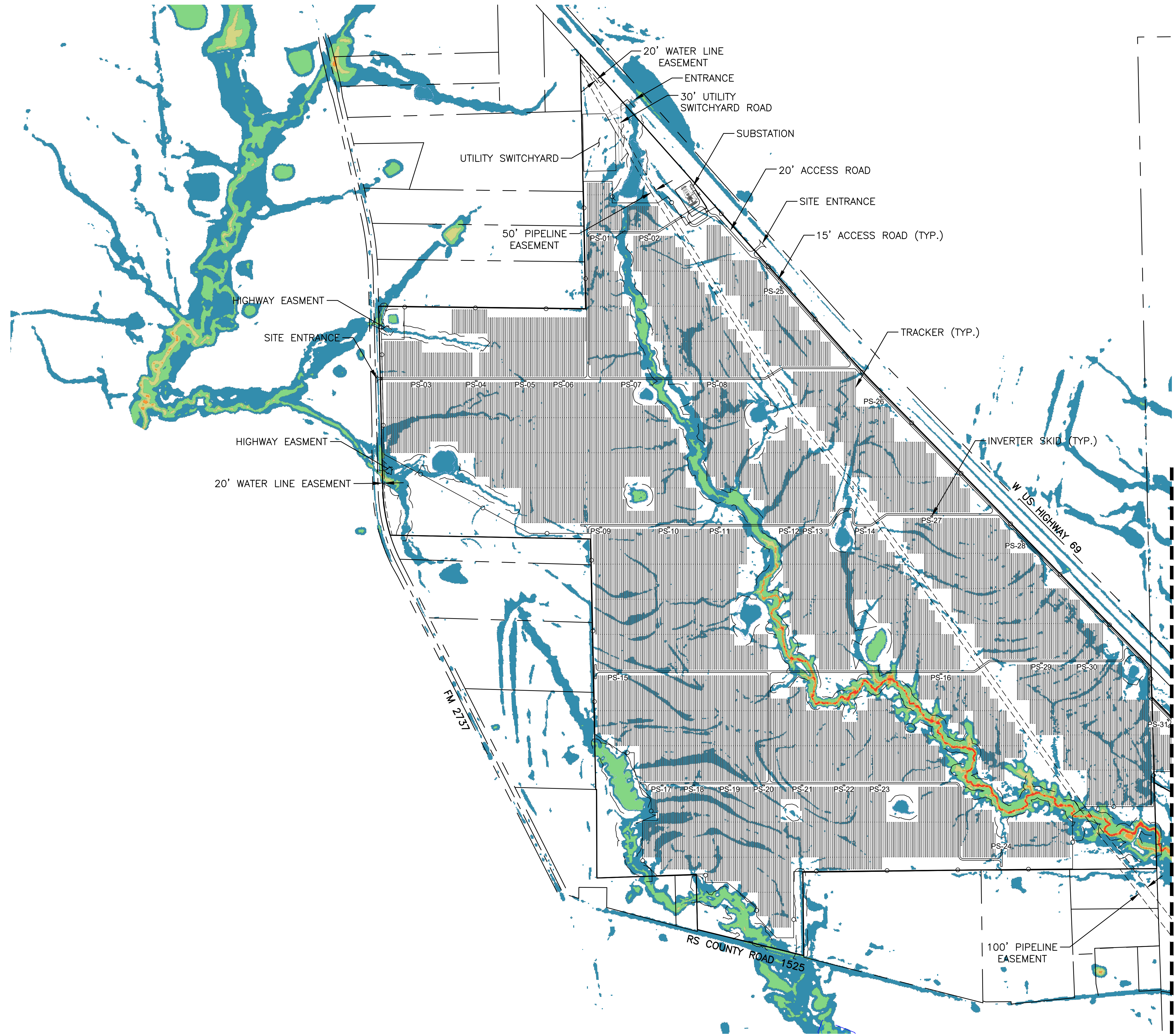
REV	DATE	DESCRIPTION	DRW	CK	APV
0	2/02/24	10% CONCEPTUAL DESIGN	CRK	MJS	MCF
1	2/07/24	CONCEPTUAL DESIGN	CRK	MJS	MCF
2	2/16/24	ADDITION OF SWITCHYARD	CRK	MJS	MCF

SCALE: 1"=500'
SIZE: 22"x34"
PROJECT#: AZENE2400

PROJECT: **BARRETT SOLAR**
W US HIGHWAY 69, POINT, TEXAS 75472

TITLE: **SITE LAYOUT 03**

SHEET: CV02.03
REV: 2

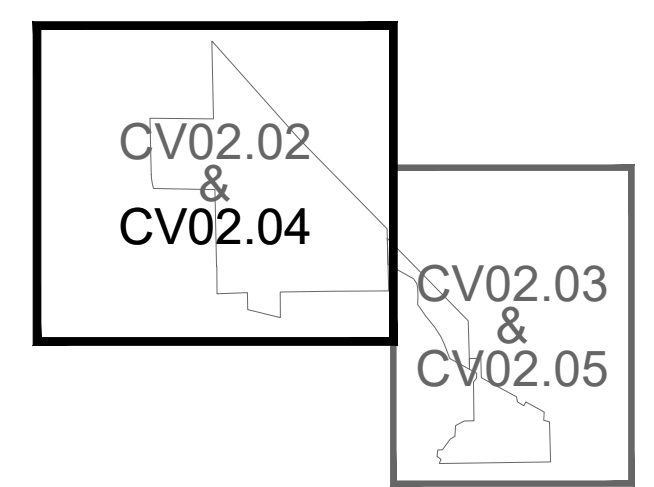


LEGEND

- RIGHT OF WAY LINE
- SITE BOUNDARY
- PARCEL LINE
- EASEMENT
- CHAIN LINK FENCE
- SETBACK
- WATER BOUNDARY
- FEMA FLOODZONE
- FEMA SETBACK

100-YEAR FLOOD DEPTH (METERS)	
	FROM 0.05 TO 0.50
	FROM 0.50 TO 1.00
	FROM 1.00 TO 1.50
	FROM 1.50 TO 2.00
	FROM 2.00 AND ABOVE

FLOOD DEPTH INFORMATION SOURCE:
 HYDROLOGICAL AND FLOOD STUDY – EXISTING CONDITIONS
 PV BELLTOWN – BARRETT SOLAR, TEXAS (USA)
 JULY 6, 2023
 ZUBIA INGENIEROS



KEY MAP

NOT FOR CONSTRUCTION



ENGINEER
AZTEC TYPSA

DEVELOPER
cobra

CONTRACTOR

REV	DATE	DESCRIPTION	DRW		CK		APV	
			CRK	MJS	CRK	MJS	CRK	MJS
0	2/02/24	10% CONCEPTUAL DESIGN						
1	2/07/24	CONCEPTUAL DESIGN						
2	2/16/24	ADDITION OF SWITCHYARD						

SCALE: 1"=500'
 SIZE: 22"x34"
 PROJECT#: AZENE2400

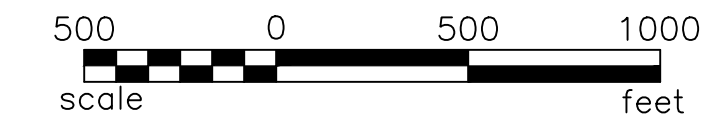
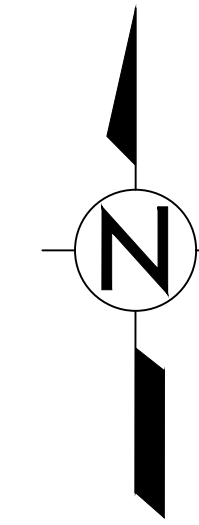
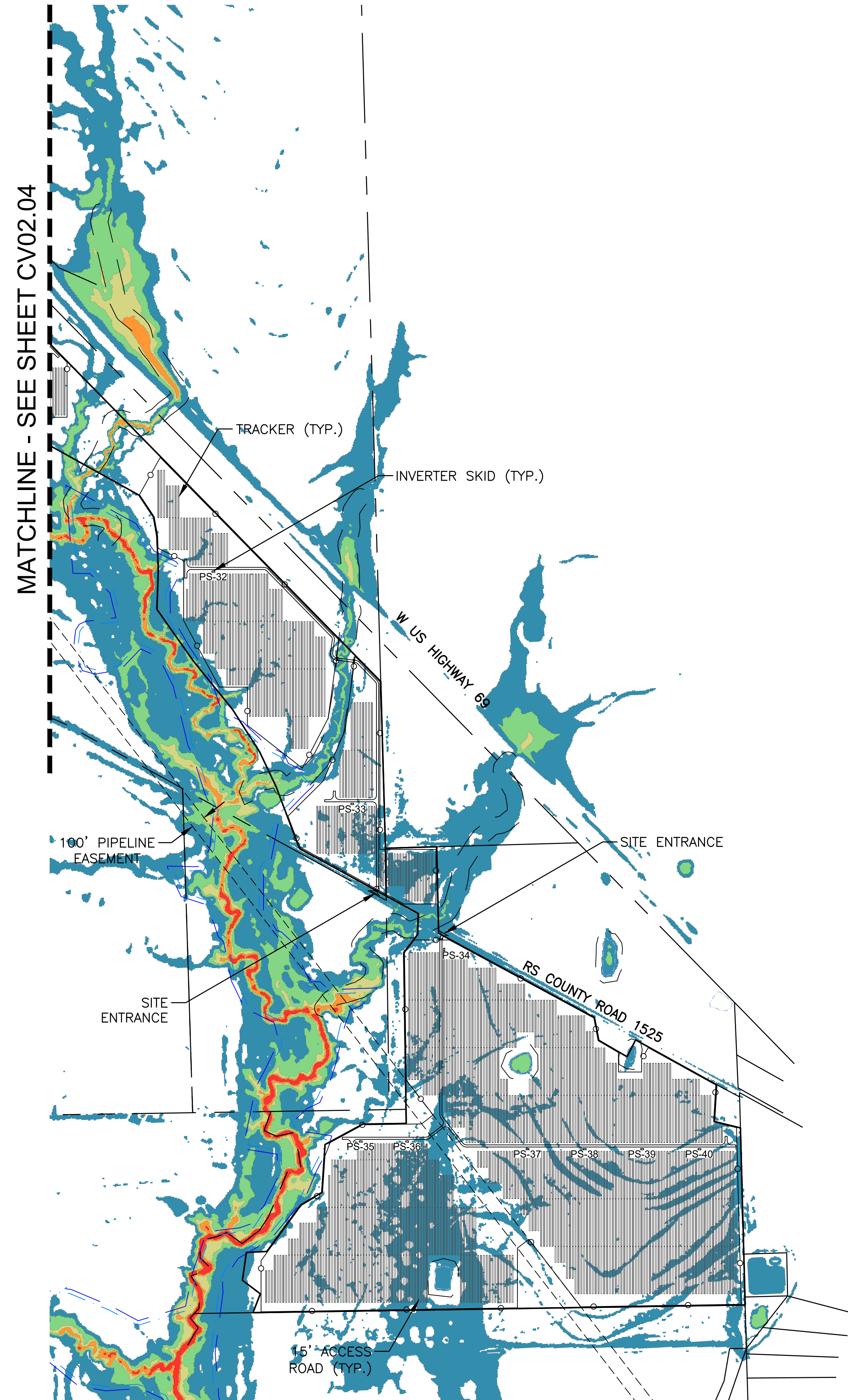
PROJECT
BARRETT SOLAR
 W US HIGHWAY 69, POINT, TEXAS 75472

TITLE
 SITE LAYOUT 03

SHEET
 CV02.04

REV
 2

MATCHLINE - SEE SHEET CV02.05

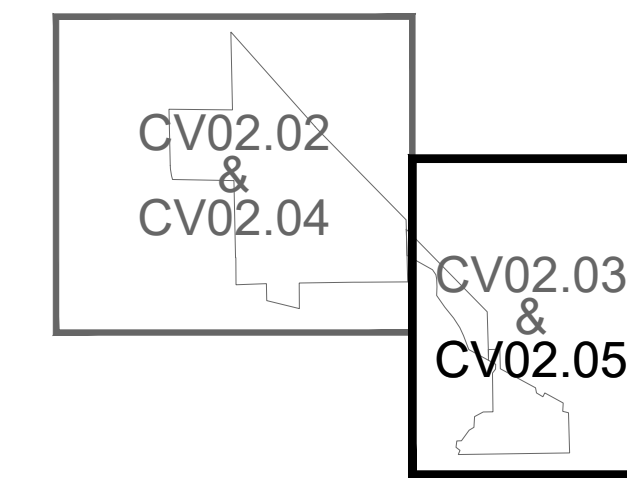


LEGEND

- RIGHT OF WAY LINE
- SITE BOUNDARY
- PARCEL LINE
- EASEMENT
- CHAIN LINK FENCE
- SETBACK
- WATER BOUNDARY
- FEMA FLOODZONE
- FEMA SETBACK

100-YEAR FLOOD DEPTH (METERS)	
	FROM 0.05 TO 0.50
	FROM 0.50 TO 1.00
	FROM 1.00 TO 1.50
	FROM 1.50 TO 2.00
	FROM 2.00 AND ABOVE

FLOOD DEPTH INFORMATION SOURCE:
 HYDROLOGICAL AND FLOOD STUDY – EXISTING CONDITIONS
 PV BELLTOWN – BARRETT SOLAR, TEXAS (USA)
 JULY 6, 2023
 ZUBIA INGENIEROS



KEY MAP

NOT FOR CONSTRUCTION



ENGINEER
AZTEC TYPSA

DEVELOPER
cobra

CONTRACTOR

REV	DATE	DESCRIPTION	DRW			CK			APV		
			CRK	MJS	MCF	CRK	MJS	MCF	CRK	MJS	MCF
0	2/02/24	10% CONCEPTUAL DESIGN									
1	2/07/24	CONCEPTUAL DESIGN									
2	2/16/24	ADDITION OF SWITCHYARD									

SCALE: 1"=500'
 SIZE: 22"x34"
 PROJECT#: AZENE2400

PROJECT: **BARRETT SOLAR**
 W US HIGHWAY 69, POINT, TEXAS 75472

TITLE: **SITE LAYOUT 05**

SHEET: CV02.05 REV: 2